

Demystifying Research

Research is a core part of our society, both at a local level and on a global scale. But what is research, why does it matter, and who are researchers?

Research in Reality

What is research?

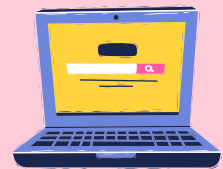


The [Campaign for Science and Engineering](#) broadly defines research as: "activities which lead to the creation of a new product or service, or that solve a problem".

Why is research important?

Research has a range of social and economic benefits: from improvements to better understanding of social and cultural issues. Research creates jobs and educational opportunities, in addition to supporting growth in local and national economies.

Where is research done?



Research settings can include factories, laboratories, hospitals, archives, libraries, museums, ecological sites, archaeological sites, universities, as well as community venues and businesses.

The Real People in Research

WHO DOES RESEARCH?

Individuals and groups of researchers working in both public and private sectors including in businesses, charities, campaigning organisations, universities, the civil service, local councils, and NHS bodies.

WHO FUNDS RESEARCH IN THE UK?

Research can be funded privately or publicly. UK Research and Innovation (UKRI) invests in science and research and is allocated funding by HM Treasury, which receives its money largely through taxes. UKRI provides funding for researchers, businesses, universities, NHS bodies, charities, and non-governmental organisations (NGOs).

WHAT TYPES OF RESEARCH DO UNIVERSITIES DO?

Universities in the UK support research across a wide range of subjects, from sciences, engineering, medicine and health-related subjects to social sciences, creative arts, and humanities.

WHO ARE RESEARCHERS AT UK UNIVERSITIES?

Technicians, students, research academics, teaching staff and professional services staff can all do research based at universities. Academics may have the title of 'Research Fellow', 'Lecturer', or 'Professor'. Students learn how to do academic research by doing a research degree (a PhD) and work on a specific project to gain this degree.

WHAT RESEARCH HAPPENS IN NOTTINGHAMSHIRE?

Universities, businesses, charities, and public sector bodies e.g. the NHS all do research which aims to improve life for people across Nottinghamshire. Researchers at both NTU and the University of Nottingham undertake research across subject areas which aim to better understand issues locally, nationally, and internationally. To find out more about research focusing on Nottinghamshire-specific issues and challenges, visit [Co\(l\)laboratory](#) and [City as Lab](#).