



Co(l)aboratory

Universities for
Nottingham

Co(l)aboratory

Supporting Nottingham and Nottinghamshire communities
through partnership, research and collaboration

#UfNCollab

collaboratory@universitiesfornottingham.ac.uk

www.ufncollaboratory.ac.uk



VIDEO: Co(l)laboratory Cohort 1

Summary interviews from our team and PhD students on our very first research projects.



Watch online: <https://nottinghamtrentuniversity.wistia.com/medias/1p8hsbodxn>

#UfNCollab

The Challenges



- **Community perspectives in Research**
 - University research activity is seldom informed by local challenges or the experiences of local people.
- **Research that reflects the community**
 - Research communities are seldom representative of their local populations.
- **Broadening the definition of excellence in research**
 - Traditional approaches to PhD candidate recruitment exclude a wide range of people with excellent potential to succeed in research.
- **Addressing locally-specific challenges**
 - Both our City and County experience challenges that are uniquely defined by its people and places. These ultimately constrain productivity, growth and wellbeing.

Aims of Co(l)laboratory



Develop a programme of research that is responsive to local needs, is based on the lived experience of Notts communities, and that delivers meaningful, real-world change.



Create a programme of engagement with local citizens to enable effective, two-way engagement between our local communities and research teams, throughout the research process.



Diversify our pool of PhD researchers by recruiting talented, community-minded candidates from the local area, using a new, competency-based approach that prioritises future potential over traditional, more exclusionary metrics.



Work with community partners and wider members of the local community to make university research skills and resources more accessible, and to use these to support the broader development of people in our region.

1. Understanding community priorities

People from Nottingham & Nottinghamshire's communities share their ideas about what they think our research projects should focus on.



Community Organisations



Nottingham Researchers

Project Co-Creation Process



2. Research projects with community at their core

Nottingham researchers and members of local community organisations come together to develop new research projects which are based on the priorities of local communities.



Co(l)laboratory Research Projects

Nottinghamshire Communities

Co(l)laboratory PhD Studentships

3. Fully-funded PhD projects open to local candidates

Each year, 10 research ideas are selected to become fully-funded PhD research projects.

PhD projects are offered to promising local candidates with a strong researcher mindset and solid understanding of the community challenges of the research.

Citizen Scientist Research Placements

4. Paid research opportunities for local candidates

Each year, 5 research ideas are selected to become part-time, paid research placement projects.

Placements are open to local residents and are designed to provide hands-on research experience, and to support wider research work on community challenges.

5. Open results that drive meaningful change

Findings from all of our research projects are shared with those who helped us shape it.

This new knowledge also helps us to inform and develop future research projects on more local challenges.

Research findings



Co(l)laboratory PhD studentships

- **What is a PhD?**

An academic qualification, earned by carrying out research on a defined subject to make a new contribution of knowledge to the field/sector. This culminates in the production of a thesis; a large piece of written work that details your research.

- **How do they work?**

Very different to taught qualifications. Similar to on-the-job learning roles. Candidates develop and conduct original research, all while receiving full support, training, and other opportunities.

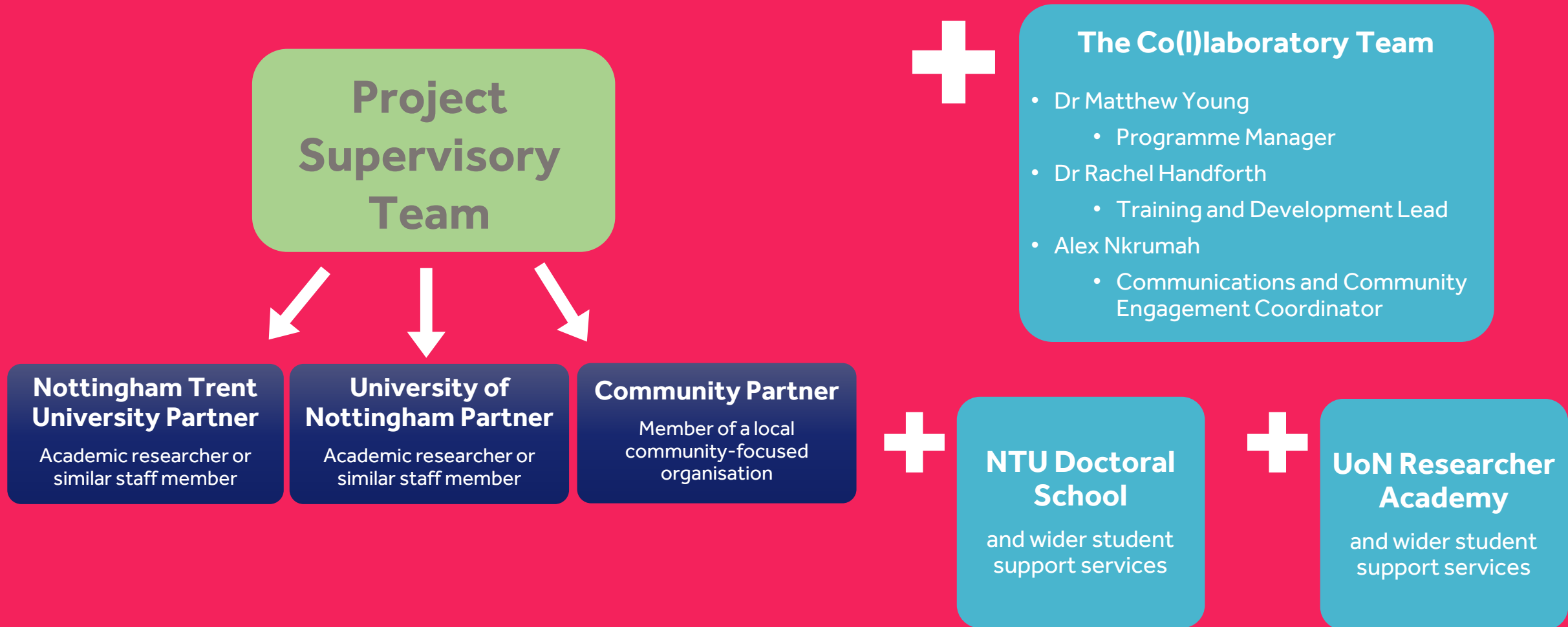
- **What is a studentship?**

An award of funding, linked to certain requirements, to enable a candidate to carry out and earn a degree – in this case, a PhD as part of the Co(l)laboratory programme.

What do our studentships include?

- Payment of tuition fees for the full duration of your PhD, whether part-time or full-time (Approx. £15,000 total)
- A monthly, tax-free stipend of £18,622, per annum, pro-rata, paid in arrears. Equates to approx. £1,550 per month for full-time candidates.
- Access to training and resources from two, world-class universities. All candidates get full access to both Nottingham Trent University and University of Nottingham.
- Dedicated supervision from expert researchers, community practitioners, and development professionals.
- Unique and comprehensive support through our Civic Leadership Programme, aimed at developing you as researchers who can be leaders in community-engaged research.
- Award of a PhD degree on successful submission of a PhD thesis and passing of the PhD viva (discussion-based assessment of the thesis).

Who supports you as a Co(l)aboratory PhD candidate?



Atypical Co(l)laboratory PhD

Full-time candidates

Year	Month	Activity
Year 1	0-2 months	<ul style="list-style-type: none"> Co(l)lab inductions Project-specific school inductions Annual Co(l)lab Research Showcase
	2-6 months	<ul style="list-style-type: none"> Standard PhD Training programme begins Co(l)lab Summer Training Series
	6-9 months	<ul style="list-style-type: none"> Submission of research plans (Project Approval) Research studies/experiments begin for most.
	12 months	<ul style="list-style-type: none"> Annual progress review
Year 2	14 months	<ul style="list-style-type: none"> Annual Co(l)lab Research Showcase
	12-24 months	<ul style="list-style-type: none"> Student-led community projects
	24 months	<ul style="list-style-type: none"> Annual progress review
Year 3-4	26 months	<ul style="list-style-type: none"> Annual Co(l)lab Research Showcase
	36 months	<ul style="list-style-type: none"> Completion of practical research work Annual progress review (or thesis submission)
	36-48 months	<ul style="list-style-type: none"> Submission of completed PhD thesis

Part-time candidates

Year	Month	Activity
Year 1	0-2 months	<ul style="list-style-type: none"> Co(l)lab inductions Project-specific school inductions Annual Co(l)lab Research Showcase
	2-12 months	<ul style="list-style-type: none"> Standard PhD Training programme begins Co(l)lab Summer Training Series
	12-14 months	<ul style="list-style-type: none"> Annual progress review
Year 2	12-14 months	<ul style="list-style-type: none"> Submission of research plans (Project Approval) Research studies/experiments begin for most.
	14 months	<ul style="list-style-type: none"> Annual Co(l)lab Research Showcase
	24 months	<ul style="list-style-type: none"> Annual progress review
Year 3	26 months	<ul style="list-style-type: none"> Annual Co(l)lab Research Showcase
	24-36 months	<ul style="list-style-type: none"> Student-led community projects
	36 months	<ul style="list-style-type: none"> Annual progress review
Year 4	38 months	<ul style="list-style-type: none"> Annual Co(l)lab Research Showcase
	48 months	<ul style="list-style-type: none"> Annual progress review
Year 5	50 months	<ul style="list-style-type: none"> Annual Co(l)lab Research Showcase
	60 months	<ul style="list-style-type: none"> Annual progress review
Year 6-8	62 months	<ul style="list-style-type: none"> Annual Co(l)lab Research Showcase
	72 months	<ul style="list-style-type: none"> Annual progress review (or thesis submission)
	72-96 months	<ul style="list-style-type: none"> Submission of completed PhD thesis

Developing You as Future Civic Leaders in Research

Core Training Streams	
1	Introduction to Research (Academic writing, philosophy of research, core research skills)
2	Approaches to Research
3	Becoming a Co(l)laboratory Researcher
4	Doing Collaborative Research
5	Doing Ethical Research
6	Becoming a Civic Leader
7	Doing Impactful Research
8	Managing your Research
9	Communicating your Research

Civic Leadership in Research	
This module supports PGRs to develop relevant knowledge, skills and capacity to become future civic leaders, able to use their research to enact positive change in their local communities.	
FT: Year 1 PT: Years 1-2	<ul style="list-style-type: none"> Defining Civic Leadership Intro to Public/Civic Engagement Partnership working with civic organisations and civic leaders Understanding how to make change: activism, evidence and policy Intro to Public Policy
FT: Year 2 PT: Years 2-4	<ul style="list-style-type: none"> Intro to Networking- negotiating spaces and relationships. Understanding different value systems in civic organisations. Understanding leadership styles Becoming an agent for change Using data & evidence to influence change Intro to Influencing Policy
FT: Year 3 PT: Years 4-6	<ul style="list-style-type: none"> Negotiation and Influencing Building alliances for change Intro to Policy development, writing and implementation Inclusive Civic Leadership

Who are we looking for?

- Independent and highly self-motivated
- Curiosity and a passion for learning
- Analytical, researcher mindset with keen attention to detail
- Strong organisational and time-management skills
- Ability to collaborate effectively with varied stakeholders
- Perseverance and resilience in the face of challenge and failure
- Genuine desire to undertake community-engaged research
- Handle complex concepts and data/information, confidently

How are applications assessed?

- Co(l)laboratory assess applicants based on holistic skills, values and preparedness of each candidates, focusing on potential for success over pure academic credentials.
- Each project is assessed against a set of Core Competencies and additional Project Specific Competencies.
 - **Comprehension and evaluation**
 - **Social and emotional**
 - **Preparedness and potential for success**
 - **Community Context**
- All applications are blinded before assessment. This means that the panel of experts reviewing your applications will not see any of your personal identifying information such as your name, gender, ethnicity, address, etc.

Who can apply?

- You can be based anywhere in the UK
- You must qualify for UK Home Student fees
 - This is NOT the same as having UK citizenship.
- Applicants must hold at least an upper 2nd class (2.1) undergraduate degree or equivalent degree, or a 2nd class (2.0) undergraduate degree with a masters degree, or must be able to demonstrate equivalent professional experience.
- Applicants must be available to begin study at Nottingham Trent University or the University of Nottingham on our 3rd April 2024 entry date. Successful candidates will be required to complete formal enrolment between 1st and 19th April 2023.
- Applicants can only submit one application relating to one project from the list of available 2024 UfN Co(l)laboratory PhD projects. Applications identifying multiple projects or none will be rejected.

Key Dates

Application Deadline



12 noon, Friday 15th December

Interviews



Week beginning 5 February 2024

Start Date



Wednesday 3rd April 2024

Further Support

Face-Face Drop in Sessions

The Carousel co-working space, 25 Hockley, Nottingham, NG1 1FH

- 10am-6pm, Monday 20 November 2023
- 10am-6pm, Tuesday 28 November 2023

Online Workshop – PhDs Demystified

Register your place [HERE](#)

- 12pm-1pm, Thursday 23 November 2023
- 5pm-6pm, Monday 27 November 2023

Find out More

Sign up to the Co(I)laboratory mailing list

Stay up to date with us and find out more about future events and opportunities. Scan the QR code or [CLICK HERE](#)



Visit our website

Explore Co(I)laboratory's work in full at www.ufncollaboratory.ac.uk/applynow

Email us

collaboratory@universitiesfornottingham.ac.uk

Follow us on social media and join the conversation



@UfNCollab



collaboratory.crowdicity.com



UfN Co(I)laboratory